

FINGERINGS FOR PITCH ALTERATION

Depress key indicated in addition to regular position unless otherwise noted.



To raise pitch	C#	C#	C#	D#	D#	sF#	sF#
To lower pitch	None	None	B or B \flat	C	C	C	None

*There are no pitch alteration fingerings below low D.

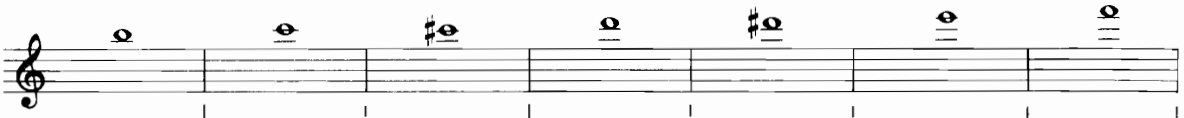


Raise	G#	G#	G# or sB \flat	sB \flat	sC or "long."**	C# or high D	High Eb
Lower	6	4, 5, or 6	3	4, 5, or 6	4, 5, and 6	B	B

**See regular fingering chart for this fingering.



Raise	D#	D#	D#	F#	F#	G#	G#
Lower	B \flat	C	C	C	C and B \flat	6	Try alt.



Raise	G# or sB \flat	sB \flat	sC	sC	sC	None	None
Lower	None	4, 5, or 6	4 and 6, or 4, 5, and 6	4, 5, and 6	Close D key	Close D# or D key. Try F key only.	Use D-E-F or D#-E-F or D-D#-F